

SMITH DAIRY WEST P.U.D.-PLAT No. 3
BEING A REPLAT OF PART OF BLOCK 38 OF PALM BEACH FARMS
COMPANY PLAT No. 3, AS RECORDED IN PLAT BOOK 2, PAGES
45 THROUGH 54 OF THE PUBLIC RECORDS OF PALM BEACH COUNTY, FLORIDA
PALM BEACH COUNTY, FLORIDA
SHEET 6 OF 9 SHEETS
MARCH 1996

WATER MANAGEMENT TRACT No. 3
TO BE MAINTAINED BY THE SMITH FARM MASTER ASSOCIATION, INC.

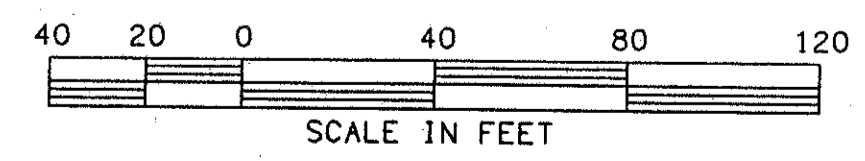
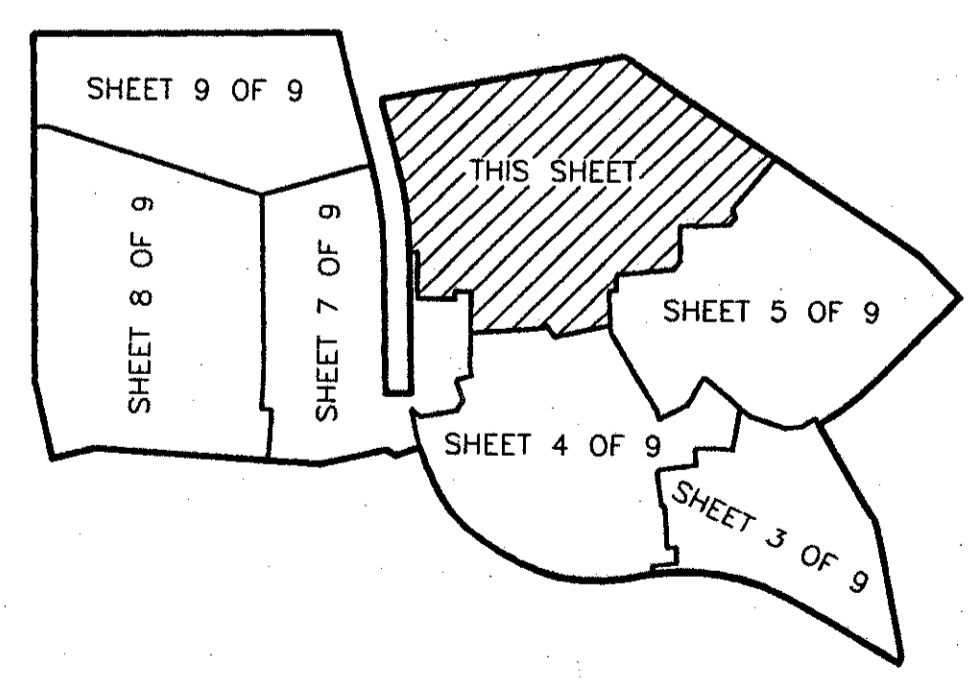
PET. 94-77
ALLOC. #0001
5/2/2/I

MATCH LINE
SEE SHEET 5 OF 9

PET. 94-77
SMITH DAIRY WEST P.U.D.
PODS BVC
POD D (TRACT A THIS PLAT)
TO BE RE-PLATTED

0653-003

SHEET INDEX



- LEGEND:
- = PERMANENT REFERENCE MONUMENT "P.L.S. 4828"
 - = PERMANENT CONTROL POINT "P.C.P. 4828"
 - R = RADIUS
 - L = ARC LENGTH
 - Δ = DELTA (CENTRAL ANGLE)
 - PC = POINT OF CURVATURE
 - PT = POINT OF TANGENCY
 - PSM = PROFESSIONAL SURVEYOR & MAPPER
 - PLS = PROFESSIONAL LAND SURVEYOR
 - UE = UTILITY EASEMENT
 - DE = DRAINAGE EASEMENT
 - LME = LAKE MAINTENANCE EASEMENT
 - N = NORTHING (GRID)
 - E = EASTING (GRID)
 - (c) = CALCULATED
 - (R) = RADIAL
 - MREE = MAINTENANCE AND ROOF EAVE EASEMENT
 - LAE = LIMITED ACCESS EASEMENT

SCALE: 1"= 40'	NICK MILLER, INC. Surveying Planning & Development Consultants	DRAWN BY:
DATE: MARCH 1996		CHK:
SMITH DAIRY WEST P.U.D.-PLAT No. 3		
2560 RCA Blvd. Suite 105 Palm Beach Gardens, Florida 33410 (407) 827-5200		DRAWING NUMBER 94014AF

SUBDIVISION: Smith Dairy West
BOOK: 77
PAGE: 131
FLOOD ZONE: B
FLOOD MAP: 170A
QUAD: 49
ZONING: PUD
SE: 94-77
ZIP CODE: 33467
PUD NAME: Smith Dairy West

94-77
11-11-96

